

PRIME
RESEARCH

By  **HDFC securities** 
Click. Invest. Grow. **20 YEARS**

 **HDFC securities** 
Click. Invest. Grow. **20 YEARS**

Prime Weekly

February 03, 2025



Tumultuous Week ahead - Trump Tariffs Trigger Trade war

Global markets face significant turbulence following U.S. President Donald Trump's announcement of new tariffs: 25% on Canadian and Mexican imports, and 10% on Chinese goods. **U.S. stock futures have fallen sharply in response, potentially setting the stage for a volatile week in global equities.** Canada has swiftly retaliated with its own 25% counter-tariff on U.S. goods, affecting trade worth over \$100 billion.

The dollar has strengthened considerably against major currencies, with the Canadian dollar dropping to its lowest level since 2003 and the euro continuing its downward trend. **This dollar rally reflects market expectations that the tariffs will boost inflation and maintain elevated U.S. interest rates.** Additionally, investors believe these measures will impact foreign economies more severely than the U.S., enhancing the dollar's appeal as a safe-haven currency.

The Fed held interest rates steady this week, as expected, as core PCE remains above the 2% target. The Federal Reserve maintained steady interest rates this week, an anticipated move given that core PCE remains above the 2% target and the pace of disinflation has moderated.

Asian markets experienced sharp declines in morning trading, while oil prices surged higher.

The budget's emphasis on consumption-oriented measures, coupled with a relatively modest increase in capital expenditure allocation, signals a shift in focus from strengthening fiscal multipliers through capex to prioritizing immediate economic gains. This shift has particularly benefited FMCG and automotive sectors, following significant adjustments to personal income tax structures.

Foreign portfolio investors maintained their exodus from Indian equities, marking their 22nd consecutive session of selling on the budget day.

With budget-related movements now largely priced in, market attention is returning to global factors. Indian markets are expected to open sharply lower in response to concerning global indicators, with technical support levels anticipated between 23,000 and 23,200 for the week.

DOMESTIC INDICES

	24-01-2025	01-02-2025	% CHG
SENSEX	76190	77506	1.7%
NIFTY	23092	23482	1.7%
MIDCAP	53263	53486	0.4%
SMALL CAP	16956	16980	0.1%

NIFTY EARNINGS

NIFTY	FY 24	FY 25E	FY 26E
EPS	1000	1130	1200
P/E	23	21	19

SECTORAL INDICES

	24-01-2025	01-02-2025	% CHG
REALTY	6717	7415	10.4%
AUTO	49967	52428	4.9%
FMCG	20367	21153	3.9%
BANKEKX	54723	56222	2.7%
CD	58173	59283	1.9%
CG	62231	62582	0.6%
PSU	17887	17897	0.1%
OIL & GAS	25182	24993	-0.8%
HEALTHCARE	42199	41845	-0.8%
POWER	6461	6381	-1.2%
METAL	28505	28145	-1.3%
TECK	19454	18981	-2.4%
IT	42714	41461	-2.9%




GLOBAL INDICES

	24-01-2025	01-02-2025	% CHG
FTSE	8502	8674	2.0%
DAX	21395	21732	1.6%
CAC	7928	7950	0.3%
DOW JONES	44424	44545	0.3%
SHANGHAI	3253	3251	-0.1%
S&P 500	6101	6041	-1.0%
HANG SENG	20066	19807	-1.3%
NASDAQ	19954	19627	-1.6%
NIKKEI	39932	38614	-3.3%

INSTITUTIONAL ACTIVITY

Rs Cr	31-01-2025	01-02-2025	FEB TOTAL
FII	-1189	-1327	-2516
DII	2232	824	3056

News Highly Sensitive to Stock Price

Impact	Stock	News
	Neogen Chemicals	<p>Revenue for the quarter increased 22.5% YoY at Rs 201.4 crore. Operating margin improved 490bps YoY at 17.2%. Net profit increased 809% YoY at Rs 10 crore, albeit on a lower base. Finance cost increased 27.8% YoY at Rs 13.4 crore.</p> <p>This was achieved despite challenging pricing conditions. Battery chemicals arm (Neogen Ionics) has commenced lithium salt exports, contributing to the topline. Neogen Ionics is positioned for substantial growth from FY26 driven by new capacities.</p> <p>Overall, the company is confident of achieving FY26 revenue of ~Rs 950 crore in the standalone business. Beyond FY26, the rapid scale up in Neogen Ionics will drive consolidated performance.</p>
	Aarti Industries	<p>Revenue for the quarter grew 6.2% YoY at Rs 1840cr. Operating margin slipped 240bps YoY at 12.6%. Net profit declined 63% YoY at Rs 46cr. Finance cost increased 57% YoY at Rs 85cr.</p> <p>Capex for FY25 estimated to be Rs 1300-1400 crore vs the earlier estimate of Rs 1500-1800 crore. Capex for FY26 estimated to be around Rs 1000 crore. Company targets EBITDA in the range of Rs 1800-2200 crore in FY28E.</p> <p>EPS for the quarter stood at Rs 1.3 and it was at Rs 6.5 for 9M FY25. At CMP, the stock trades at 25x FY27E EPS.</p>
	Eicher Motors	<p>Total motorcycle sales up 20% in January-2025 at 91,132 units, against an estimate of ~87,000 units, while international business sales grew 79% at 10,080 units against the year ago figure.</p>

Stock	News
Oil India	The company has set up a renewable energy subsidiary on January 31, which will be wholly-owned, and look to generate energy through non-conventional sources. Oil India will hold 100% shareholding in the new entity.
Reliance Industries	The company has introduced Chinese fast fashion label Shein this weekend, almost five years after it was banned in India following diplomatic tensions between India and China. After a test launch on its fashion app Ajio for two months, Reliance has now begun selling Shein on an independent app available on AppStore and GooglePlayStore.
Coal India Ltd (CIL)	The company reported its first monthly production de-growth in the current fiscal with the miner's output reducing by 0.8 per cent year-on-year in January. The company produced 77.8 million tonnes (MT) of coal in January as compared to 78.4 MT in the year-ago month.
OMC	Oil marketing companies have reduced the price of commercial LPG gas cylinders with the new rates effective from Feb. 1. The cost of a 19 kg commercial LPG gas cylinder has been reduced by Rs 7.
Anant Raj	Revenue in Q3FY25 went up 36.2% YoY to Rs 534 crore. EBITDA increased 47.1% YoY to Rs 133 crore. Net profit stood at Rs 110 crore at the end of the December quarter, it was up 55% from the year-ago quarter.
MOIL	MOIL achieved its highest-ever January production and sales in FY25. MOIL produced 1.6 lakh tonnes of manganese ore, while sales stood at 1.57 lakh tonnes, marking a 17% increase over the corresponding period last year. Exploratory core drilling for the month reached 11,099 metres, a 10% rise over the previous year.
Happiest Minds	Happiest Minds announced the acquisition of the Middle East business of Gavs Technologies Limited. The acquisition, valued at US\$ 1.7 million, is expected to be completed by March 15, 2025.
K P Energy	Company has successfully commissioned a 25.8 MW wind power project, increasing its total independent power producer capacity to 45.7 MW. The remaining 2.8 MW of the project is expected to be commissioned within the month, highlighting the company's commitment to renewable energy growth in India.
Quess Corp	The company received a GST demand of Rs 111 crore for FY20 to FY23. Allegations include passing on input tax credit to insurance companies without supply on manpower services.

Stock	News
CESC Ltd.	Company announced the successful acquisition of 100% share capital of Chandigarh Power Distribution Limited (CPDL) by its wholly owned subsidiary, Eminent Electricity Distribution Limited (EEDL), effective February 1, 2025.
RMC Switchgears	RMC Switchgears Limited has received a work order of Rs 108.05 crore from the Private Contractor for Development of Distribution Infrastructure Work for 11 KV UG Cable, & RMU System in some Districts of Gujarat State. The execution of these orders will further strengthen revenue stream and enhance market position.
Vinati Organics	<p>Revenue for the quarter was down 5.7% YoY at Rs 521.7 crore. Operating margin improved 310bps YoY at 27.3%. Net profit declined 10.2% YoY at Rs 93.7 crore. Other Income declined 70% YoY at Rs 6.7 crore.</p> <p>EPS for the quarter stood at Rs 9 and it was at Rs 27.2 for 9M FY25. At CMP, the stock trades at 33x FY27E EPS.</p>
Lupin Ltd.	Lupin Limited announced that the US FDA has completed a Pre-Approval Inspection (PAI) of Edaravone Oral Suspension, 105 mg/ 5 mL at its manufacturing facility in Somerset, New Jersey. The inspection was carried out from January 28 to February 1, 2025, and concluded with zero 483 observations.
Hero MotoCorp	Total sales grew 2.1% to 4,42,873 units vs. 4,33,598 units Domestic sales declined 2% to 4,12,378 units. Exports surged 140.8% to 30,495 units.

Key Events

China factory activity misses forecast in Jan amid US tariff fears- Caixin PMI

Chinese manufacturing activity grew less than expected in January as U.S. tariff fears continued to weigh on the country's economic outlook. The Caixin manufacturing PMI grew 50.1 in January, below expectations of 50.6 and the prior month's reading of 50.5.

Japan's factory activity extends decline, optimism weakens, PMI shows

Japan's factory activity fell at the fastest pace in 10 months on sluggish demand. Japan manufacturing purchasing managers' index (PMI) slumped to 48.7 in January, lower than the 48.8 in the flash reading and 49.6 in December.

Nifty : Higher high has been witnessed, Closed above short term moving averages.



Nifty Auto : Strong bull candle has been witnessed, Closed above short term moving averages. Positive momentum would continue.

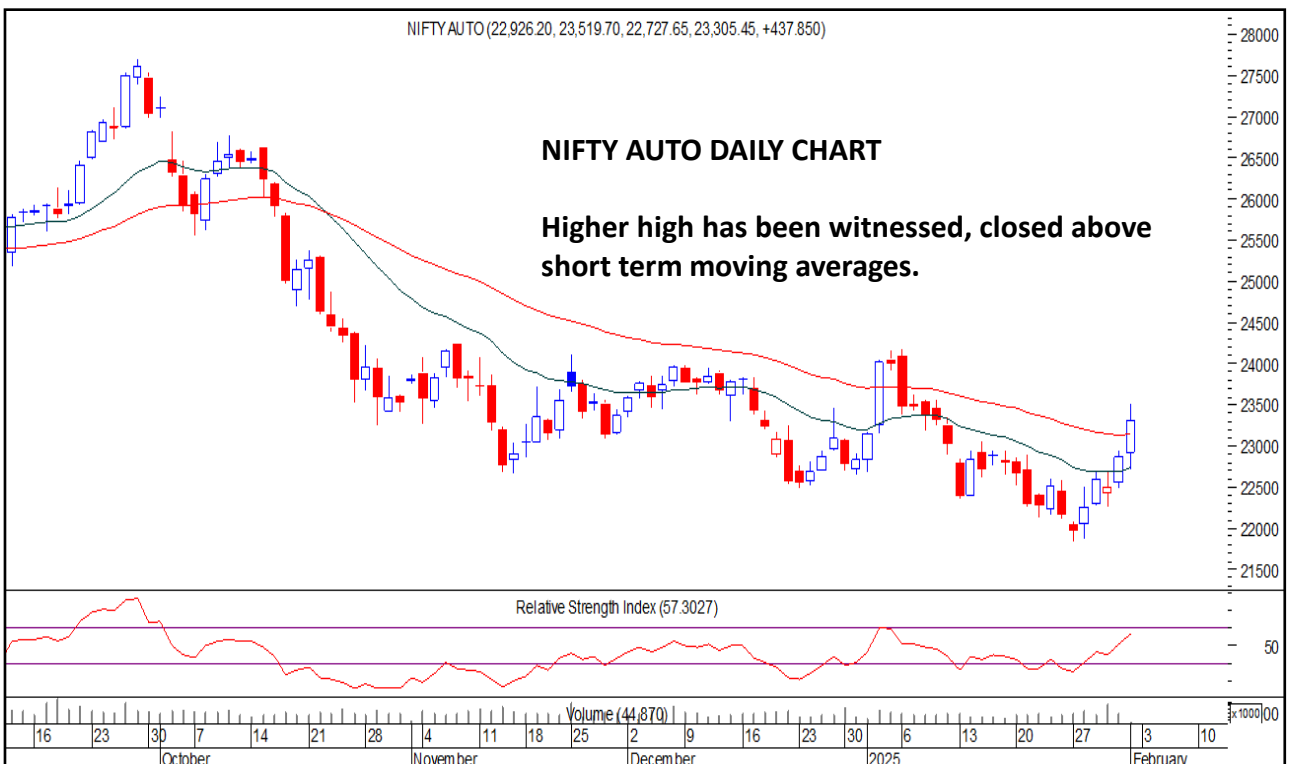
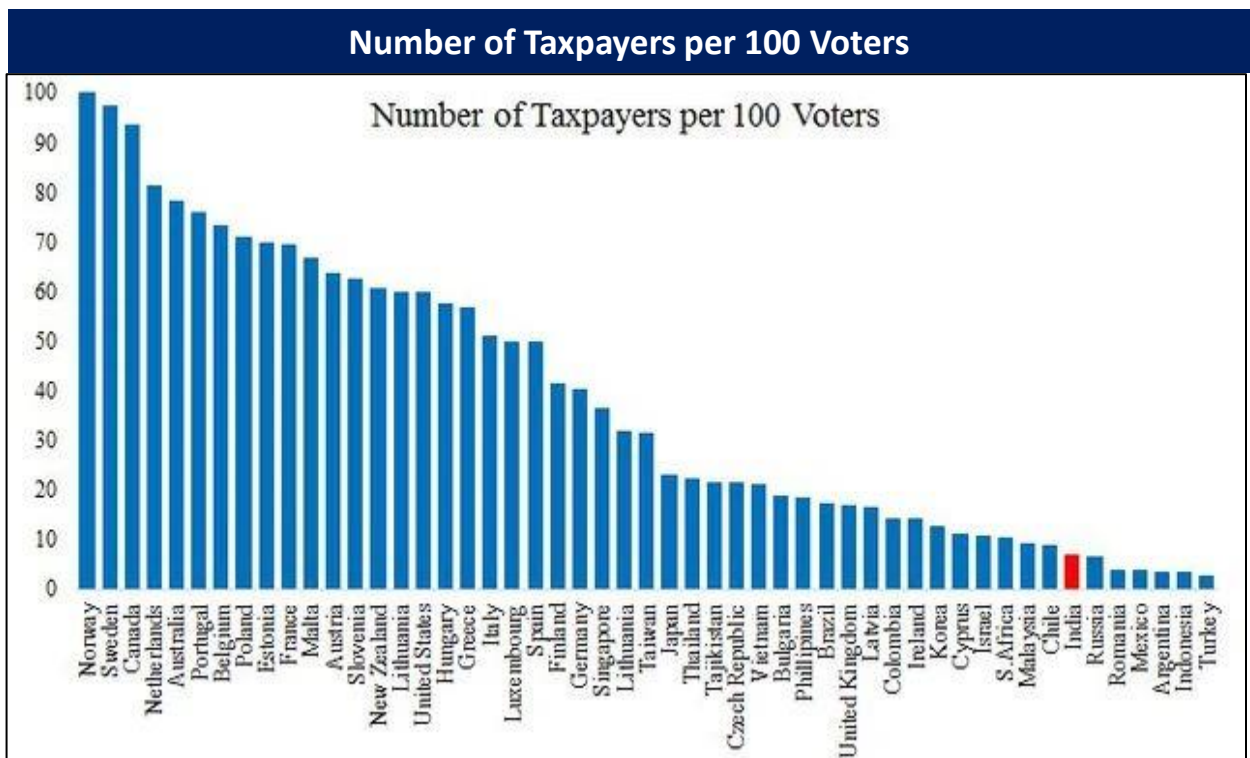


CHART WITH INTERESTING OBSERVATION:

Number Of Taxpayers is Lowest Among Major Countries

Observation:

- The image is a bar chart showing the number of taxpayers per 100 voters across various countries. Norway, Sweden, and Canada rank highest, indicating a strong taxpayer base relative to the number of voters. In contrast, countries like India, Romania, Mexico, Argentina, Indonesia, and Turkey rank at the bottom, suggesting a lower proportion of taxpayers among voters. This data could reflect differences in taxation policies, employment rates, and economic structures across nations.



Source: HSL Prime Research

F&O Highlights

SHORT BUILD UP WAS SEEN IN BANK NIFTY FUTURES

Create Shorts with the SL Of 23600 Levels.

- On the day of union budget 2025-26, Nifty broke the four-session winning streak with a minor fall of 26 points or 0.11%, to close at 23482.
- Long Unwinding was seen in the Nifty Futures where Open Interest fell by 1.91% with Nifty falling by 0.11%.
- Short Build-Up was seen in the Bank Nifty Futures where Open Interest rose by 3.62% with Bank Nifty falling by 0.16%.
- Nifty Open Interest Put Call ratio fell to 0.87 levels from 1.01 levels.
- Amongst the Nifty options (06-Feb Expiry), Call writing is seen at 23500-23600 levels, indicating Nifty is likely to find strong resistance in the vicinity of 23500-23600 levels. On the lower side, an immediate support is placed in the vicinity of 23400-23300 levels where we have seen Put writing.
- Long build-up was seen by FII's in the Index Futures segment where they net bought worth 165 cr with their Open Interest going up by 1578 contracts.

Index	Expected Trend	Prev. Close	Buy/Sell	Stop Loss	Target
NIFTY FUT	DOWN	23555.55	SELL @ 23500	23600	23350
BANK NIFTY FUT	DOWN	49768.60	SELL @ 49600	49800	49000

Nifty50 Snapshot			
	01-Feb-25	31-Jan-25	% Chg.
Nifty Spot	23482.15	23508.40	-0.11
Nifty Futures	23555.55	23620.20	-0.27
Premium/ (Discount)	73.40	111.80	N.A.
Open Interest (OI)	1.83	1.87	-1.91
Nifty PCR	0.87	1.01	-13.86

Bank Nifty Snapshot			
	01-Feb-25	31-Jan-25	% Chg.
Bank Nifty Spot	49506.95	49587.20	-0.16
Bank Nifty Futures	49768.60	49862.00	-0.19
Premium/ (Discount)	261.65	274.80	N.A.
Open Interest (OI)	0.35	0.34	3.62
Bank Nifty PCR	0.79	0.85	-7.43

Nifty Options Highest OI (Weekly)			
CALL		PUT	
Strike Price	Open Interest	Strike Price	Open Interest
24000	13660950	23000	8283975

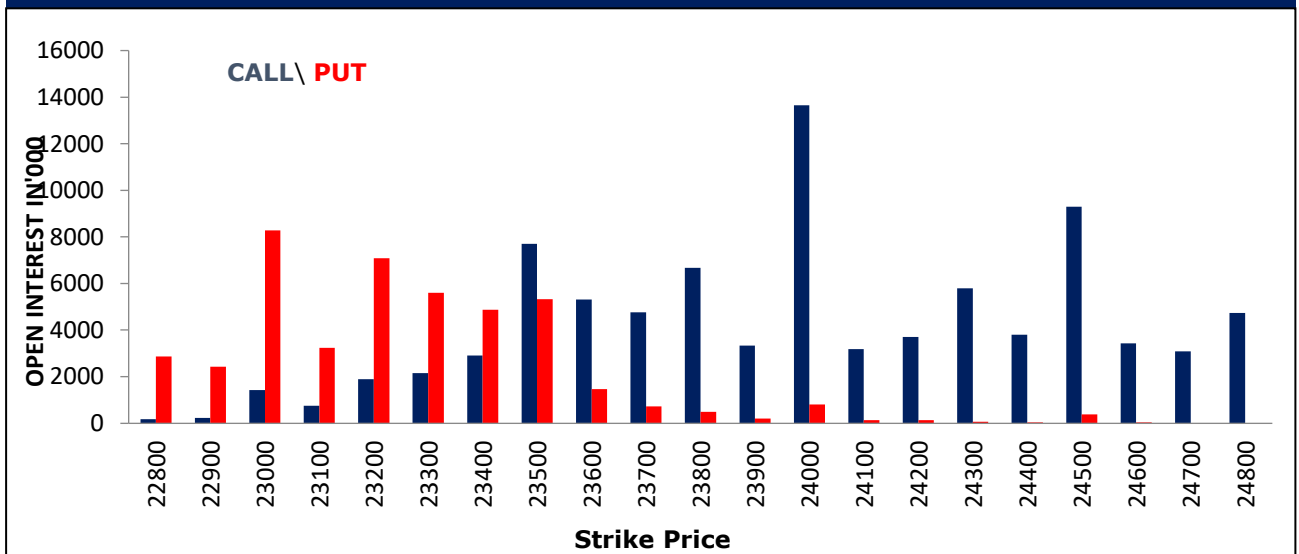
FII Activity On 01 Feb 2025

	BUY		SELL		NET	OPEN INTEREST	
	Contracts	Value (Rs Cr)	Contracts	Value (Rs Cr)	(Rs Cr)	Contracts	Value (Rs Cr)
Index Futures	24941	4179	24951	4013	165	230102	37710
Nifty Futures	17028	3010	11169	1975	1035	130901	23127
Bank Nifty Fut.	6024	899	10810	1615	-716	62135	9282
Index Options	4892351	848128	4892393	844815	3313	2624415	450883
Nifty Options	4206351	746285	4191171	740705	5580	2221201	391189
Bank Nifty Opt.	602041	89599	616195	91720	-2120	359201	53349
Stock Futures	177438	11038	171448	10110	928	5677260	354227
Stock Options	935546	58473	964850	60229	-1755	649023	39063

FII's Open Interest (Contracts)

Date	Index Futures	Nifty Futures	Bank nifty Futures	Index Options	Nifty Options	Bank Nifty Options	Stock Futures	Stock Options
01-Feb-24	230102	130901	62135	2624415	2221201	359201	5677260	649023
31-Jan-24	228524	135352	57825	2213164	1876649	312372	5618074	558863
Net Contracts	1578	-4451	4310	411251	344552	46829	59186	90160

Nifty Weekly (06 - Feb) Option Open Interest Distribution



Top Gainers OI Wise		
Company	Future OI (%)	Price (%)
DMART	30	10
UBL	27	4
HUDCO	14	-5
POLYCAB	14	-3
ASHOKLEY	13	-5

Top Losers OI Wise		
Company	Future OI (%)	Price (%)
VOLTAS	-10	5
UPL	-4	0
INDIAMART	-4	5
HAVELLS	-4	6
KALYANKJIL	-4	0

Top Gainers Price Wise		
Company	Future OI (%)	Price (%)
DMART	30	10
HFCL	9	8
CROMPTON	4	8
TRENT	-1	8
ZOMATO	2	7

Top Losers Price Wise		
Company	Future OI (%)	Price (%)
NCC	11	-8
JSWENERGY	5	-7
IRFC	11	-6
ABB	10	-6
SUPREMEIND	11	-6

Long Buildup		
Company	Future OI (%)	Price (%)
DMART	30	10
UBL	27	4
HFCL	9	8
TVSMOTOR	9	4
SJVN	9	0

Short Buildup		
Company	Future OI (%)	Price (%)
HUDCO	14	-5
POLYCAB	14	-3
ASHOKLEY	13	-5
HDFCLIFE	13	-2
ICICIPRULI	13	-2

Long Unwinding		
Company	Future OI (%)	Price (%)
POONAWALLA	-3	-1
IRB	-3	-3
HINDPETRO	-3	-4
BHARTIARTL	-2	0
RELIANCE	-2	0

Short Covering		
Company	Future OI (%)	Price (%)
VOLTAS	-10	5
UPL	-4	0
INDIAMART	-4	5
HAVELLS	-4	6
KALYANKJIL	-4	0

Securities In Ban For Trade – 03.02.2025

No.	Company Name
1.	NIL

Economic Calendar

Monday	Tuesday	Wednesday	Thursday	Friday
3 February	4 February	5 February	6 February	7 February
Japan, China, India, EU, UK, US: Manufacturing PMI EU: CPI US: ISM Mfg., Construction Spending	US: JOLTs Job opening, Factory Orders, Durable Goods Orders	Japan, China, India, EU, UK, US: Service & Composite PMI US: ADP Employment, Trade Balance, MBA Mortgage Application, ISM Service	UK: Construction PMI, BoE Policy EU: Retail sales US: Challengers Job Cuts, Initial & Continuing Jobless Claims	India: RBI Policy US: Change in Non-farm Payrolls, Unemployment Rate, Uni. of Mich. Sentiment, Wholesale Inventories

Result Calendar

Monday	Monday	Tuesday	Tuesday	Tuesday
February 03	February 03	February 04	February 04	February 04
<ul style="list-style-type: none"> • ABCAPITAL • ADIEXRE • ADMANUM • AMERISE • AMRAAGRI • APL LTD • ARIHANTSUP • BAJAJST • BANARISUG • BARBEQUE • BHAGYANGR • BHARATWIRE • BOMDYEING • BPLPHARMA • BRGIL • CAMEXLTD • CASTROLIND • CINELINE • CONTCHM • DHANUKA • DIVISLAB • DOMS • DREDGECORP • EMPIND • FORTISMLR • FRONTCAP • GATEWAY • GHCLTEXTIL • GICRE • GLAND • GROWINGTON • GRSE • GUJCOTEX • HFCL • HIGHSTREE • HMTL • HPCOTTON • HVL • INDRA MEDCO • INVIGO • JINDCAP • JYOTISTRUC • KABRAEXTRU • KAMATHOTEL • KARTKIN • KEC • KPRMILL • KSL • LINC • MADHAVIPL • MAHANIN • MANINFRA • MDRNSTL • MMFL • MODAIRY • NAHARCAP • NAHARPOLY • NAHARSPING 	<ul style="list-style-type: none"> • NEOINFRA • NILAINFRA • NLCINDIA • NOIDATOLL • OAL • PANAENERG • PARADEEP • PERFEPA • PIONAGR • POLYLINK • POLYMED • POWERGRID • PREMIERENE • PROCLB • PYRAMID • RADIXIND • REGIS • RELIGARE • SADHNANIQ • SAKSOFT • SHALBY • SHANKARA • SIKI • SKYGOLD • SMARTFIN • SMFIL • SNOWMAN • SSWRL • STOVEKRAFT • SUNILTX • SURAJLTD • SURANAT&P • SVAMSOFT • TAINWALCHM • TAJGVK • TATACHEM • THOMASCOOK • TIGERLOGS • TTFL • TUTIALKA • VKGLOBAL • VOLLF • VPRPL • WELENT • ZARCOLEA • ZPRBHSTE 	<ul style="list-style-type: none"> • ABANSENT • ABHIFIN • ADLINE • AJMERA • APOLLO • AROGRANITE • ASIANPAINT • AUTOAXLES • AZAD • BAJAJELEC • BASF • BBL • BCLENTERPR • BESTEAST • BETALA • BIJHANS • BIRLACORPN • BRPL • CEIGALL • CLEDUCATE • CLFL • DBOL • DCMNVL • DEVHARI • DHANBANK • ERIS • ESSARSHPNG • EVERESTIND • FINEORG • FOODSIN • FREDUN • GANDHAR • GARWAMAR • GEECEE • GODREJPROP • GPTINFRA • GTL • GUJTERC • HAPPSTMNDS • HIKAL • HINDOILEXP • IISL • IITL • IITLPROJ • INDIAGLYCO • INFIBEAM • INTERARCH • ISLCONSUL • JAYBHCR • JBCHEPHARM • JGCHEM • JKIL • JKTYRE • JSWHL • KAJARIACER • KHAITANLTD • KIRLIFER • KREBSBIO 	<ul style="list-style-type: none"> • KUMPFIN • KZLFIN • LEMONTREE • LIBORDFIN • LYKALABS • MAANALU • MADHUDIN • MAFATIND • MAGNAELQ • MAJESAUT • MANGCHEFER • MANRAJH • MARALOVER • MEDANTA • METROPOLIS • METSL • MFSL • MIDHANI • MOBIKWIK • MUTHOOTCAP • NILASPACE • NIVABUPA • OMKAR • ONMOBILE • OXFORDIN • PAISALO • PARASPETRO • PCJEWELLER • PHOSPHATE • PORWAL • PRECISIO • QUICKHEAL • REVAORG • RTNINDIA • SAFARI • SBGLP • SCILAL • SCTL • SHARDAMOTR • SHESHAINDS • SHIVACEM • SHREGANES • SIELFNS • SKYIND • SMLT • SMRUTHIORG • SOUTHMG • SOUTHWEST • SPSL • STERTOOLS • SUMEDHA • SYSCHEM • TATAPOWER • TFL • THERMAX • TI • TITAN • TNPETRO 	<ul style="list-style-type: none"> • TORNTPOWER • TRIVENI • UCIL • UDAYJEW • UNJHAFOR • VALLEY • VENUSREM • VISHAL • VIVANTA • VMART • WHIRLPOOL • ZEAL • ZSVARAJT • ZSVTRADI • ZYDUSWELL

Open Short-Term MTF Calls

NO.	RECO DT.	RECO	COMPANY NAME	ENTRY	CMP	SL	TARGET	UPSIDE %	VALID TILL
1	28-JAN-25	BUY	KOTAK BANK	1895.55-1840	1,903.1	1,814.0	1992	4.7	11-FEB-25
2	31-JAN-25	BUY	ASTRAL	1513.35-1470	1,508.8	1,434.0	1620	7.4	14-FEB-25
3	31-JAN-25	BUY	COAL INDIA	389.05-380	385.3	375.0	409	6.2	14-FEB-25

Open Positional MTF Calls

NO.	RECO DT.	RECO	COMPANY NAME	ENTRY	CMP	SL	TARGET 1	TARGET 2	UPSIDE %	VALID TILL
1	31-JAN-25	BUY	HUDCO	225.39-217	217.4	211.0	243.0	260.0	20	28-FEB-25

Open Muhurat Trading MTF Picks

NO.	RECO DT.	RECO	COMPANY NAME	ENTRY	CMP	SL	TARGET 1	TARGET 2	UPSIDE %	VALID TILL
1	28-OCT-24	BUY	KARUR VYSYA BANK	214-218	236.7	183.0	249.0	269.0	14	NEXT DIWALI

*= 1st Target Achieved

Open Fundamental Calls

Time Horizon= 2 - 3 Quarters

NO.	COMPANY NAME	RECO DATE	CMP	BUYING RANGE	TARGET 1	TARGET 2	UPSIDE %
1	ALLSEC*	21-MAY-24	936	1043-1065	1162	1261	34.72
2	MAHINDCIE*	24-MAY-24	462.15	536-548	588	629	36.10
3	JKIL*	18-JUN-24	724.85	813-829	902	976	34.65
4	INDNIPPON*	18-JUN-24	631.85	785-800	863	932	47.50
5	BALMLAWRIE*	5-JUL-24	196.68	268-274	300	320	62.70
6	BSOFT	8-JUL-24	535.05	705-725	785	845	57.93
7	KPIL*	8-JUL-24	1028.3	1216-1240	1346	1461	42.08
8	GODREJAGRO	15-JUL-24	747.45	826-840	909	978	30.84
9	TALBROAUTO*	22-JUL-24	290.45	346-354	387	417	43.57
10	GRANULES*	5-AUG-24	565.1	644-653	706	758	34.14
11	EMAMILTD	12-AUG-24	625.8	795-805	870	927	48.13
12	CIPLA	19-AUG-24	1439.5	1573-1587	1721	1819	26.36
13	DODLA*	19-AUG-24	1144.3	1179-1194	1305.5	1387	21.21
14	ELECTCAST	26-AUG-24	124.31	216-220	241.5	257	106.74
15	LGBBROSLTD*	2-SEP-24	1362.9	1365-1395	1519	1620	18.86
16	PATANJALI	2-SEP-24	1819.25	1930-1960	2124	2295	26.15
17	FIEMIND*	9-SEP-24	1414.4	1610-1645	1778	1915	35.39
18	BHARTIARTL	16-SEP-24	1623.25	1618-1650	1785	1897	16.86
19	IEX	23-SEP-24	168.36	229-234	253	273.5	62.45
20	ACE*	23-SEP-24	1269.35	1384-1412	1537	1632	28.57
21	MGL	23-SEP-24	1373.5	1885-1925	2080	2245	63.45
22	HERITGFOOD*	23-SEP-24	430.6	588-614	655	707	64.19
23	BHARTIHEXA	30-SEP-24	1363.55	1490-1520	1646	1737	27.39
24	IGL	7-OCT-24	194.21	544-554	605	644	231.60
25	PARAGMILK	14-OCT-24	176.08	220-235	251	273	55.04
26	TECHNOE	14-OCT-24	1043.05	1702-1737	1878	2027	94.33
27	WABAG	21-OCT-24	1349.8	1852-1890	2058	2190	62.25
28	GUFICBIO*	21-OCT-24	449.25	432-441	475	505	12.41
29	FEDERALBNK	4-NOV-24	184.09	202-207	224	240	30.37
30	BEL*	4-NOV-24	281.8	284-294	317	338	19.94
31	ICICIBANK	18-NOV-24	1255.55	1245-1275	1374	1464	16.60
32	BEML	25-NOV-24	3668.45	3777-3853	4155	4397	19.86
33	QUESS*	25-Nov-24	614.95	640-654	708.5	805	30.90

*= 1st Target Achieved

Open Fundamental Calls

Time Horizon= 2 - 3 Quarters

NO.	COMPANY NAME	RECO DATE	CMP	BUYING RANGE	TARGET 1	TARGET 2	UPSIDE %
34	NRBBEARING	2-Dec-24	254.05	290-295	324	348	36.98
35	PCBL	9-Dec-24	389.3	457-469	524	559	43.59
36	HGINFRA	16-Dec-24	1288.35	1454-1484	1617	1715	33.12
37	SUNTECK	23-Dec-24	470	490-505	554	592	25.96
38	LTFOODS	30-Dec-24	385.3	395-412	447	488	26.65
39	MASTEK	30-Dec-24	2574.5	2904-2964	3214	3506	36.18
40	GODREJCP	6-Jan-25	1191.7	1097-1127	1217	1314	10.26
41	GLENMARK	13-Jan-25	1436.9	1530-1558	1697	1838	27.91
42	GRSE	20-Jan-25	1596.65	1492-1522	1790	1790	12.11
43	CANFINHOME	27-JAN-25	660.7	680-695	755	833	26.08

*= 1st Target Achieved

NSE 200 Support & Resistance

NSE 200 SUPPORT & RESISTANCE

SYMBOL	CLOSE	R2	R1	PIVOT	S1	S2	5 DMA	20 DMA	% Delivery	Trend
ABB	5499.5	6154.4	5826.9	5616.0	5288.5	5077.6	5840.7	6221.4	51.9	Bearish
ABCAPITAL	176.6	184.6	180.6	176.6	172.6	168.6	175.7	174.4	39.1	Bullish
ABFRL	283.3	301.3	292.3	280.0	270.9	258.6	271.1	272.7	30.0	Bearish
ACC	2001.1	2072.9	2037.0	1993.5	1957.6	1914.1	2001.1	1991.9	32.0	Bullish
AMBUJACEM	501.5	532.8	517.1	502.1	486.4	471.4	517.8	527.1	44.5	Bearish
ADANIPOWER	514.3	547.8	531.1	520.0	503.3	492.2	511.3	516.7	23.3	Bearish
ADANIGREEN	996.5	1074.7	1035.6	1010.8	971.7	946.9	988.2	1006.1	42.3	Bearish
ADANITRANS	746.1	784.6	765.3	748.7	729.4	712.8	745.4	769.2	50.9	Bearish
ADANIENT	2270.0	2400.2	2335.1	2286.3	2221.2	2172.4	2283.0	2364.4	41.8	Bearish
ADANIPTS	1084.1	1142.7	1113.4	1088.2	1058.9	1033.7	1087.6	1113.7	42.9	Bearish
ASHOKLEY	206.4	227.5	216.9	210.5	199.9	193.4	208.9	209.0	44.5	Bearish
ALKEM	5029.6	5200.9	5115.2	5057.6	4972.0	4914.4	5012.7	5194.3	62.3	Bearish
APOLLOHOSP	6841.1	6993.5	6917.3	6863.8	6787.6	6734.0	6793.9	6874.4	63.8	Bearish
ASIANPAINT	2351.2	2445.5	2398.3	2341.8	2294.6	2238.1	2273.4	2272.8	59.1	Bullish
APOLLOTYRE	426.4	449.6	438.0	429.7	418.1	409.8	428.8	447.1	44.7	Bearish
AUROPHARMA	1142.6	1195.8	1169.2	1152.8	1126.2	1109.8	1158.5	1192.6	55.4	Bearish
ASTRAL	1508.8	1601.7	1555.2	1503.5	1457.1	1405.4	1486.0	1497.6	28.0	Bearish
ATGL	634.8	667.0	650.9	638.3	622.2	609.7	631.9	657.7	17.9	Bearish
AUBANK	601.1	615.3	608.2	600.9	593.7	586.4	596.6	587.2	54.5	Bullish
AWL	266.8	277.9	272.4	266.8	261.2	255.6	263.3	275.0	44.6	Bearish
AXISBANK	998.2	1018.0	1008.1	995.0	985.1	972.1	987.2	1005.2	77.1	Bearish
BAJFINANCE	8000.1	8290.4	8145.2	7964.8	7819.7	7639.3	7830.6	7442.0	61.0	Bullish
BANDHANBNK	151.4	157.7	154.5	150.9	147.7	144.1	150.5	149.6	27.5	Bullish
BATAINDIA	1377.2	1447.2	1412.2	1350.1	1315.1	1253.0	1288.5	1322.5	43.6	Bearish
BHARTIARTL	1623.3	1660.3	1641.8	1625.5	1607.0	1590.7	1621.8	1618.4	65.7	Bullish
BEL	281.8	313.9	297.8	283.6	267.5	253.3	275.7	274.9	28.5	Bullish
BHEL	200.0	221.5	210.7	203.7	192.9	185.9	198.4	205.4	19.7	Bearish
BHARATFORG	1175.2	1280.6	1227.9	1188.2	1135.5	1095.8	1198.4	1209.6	51.3	Bearish
BALKRISIND	2753.8	2866.9	2810.4	2760.2	2703.6	2653.4	2746.6	2711.4	47.5	Bullish
BIOCON	370.5	385.4	377.9	368.2	360.8	351.1	361.1	377.4	18.3	Bearish
BAJAJ-AUTO	9155.6	9418.3	9287.0	9046.6	8915.3	8674.9	8755.1	8621.8	53.2	Bullish
BAJAJFINSV	1754.0	1880.0	1817.0	1717.0	1654.0	1554.0	1758.9	1719.3	29.4	Bullish
BAJAJHLDNG	11754.0	12035.6	11894.8	11704.4	11563.6	11373.2	11395.2	11074.8	60.8	Bullish
BANKBARODA	210.8	220.4	215.6	211.6	206.8	202.8	218.2	224.9	36.2	Bearish
BANKINDIA	108.3	115.7	112.0	109.2	105.4	102.6	110.5	101.5	44.0	Bullish
ABBOTINDIA	25892.1	26568.6	26230.4	25986.7	25648.4	25404.7	25878.9	27599.6	36.2	Bearish
BOSCHLTD	28689.3	29423.3	29056.3	28752.9	28385.9	28082.5	28790.9	30733.7	61.4	Bearish
BPCL	255.7	269.3	262.5	255.2	248.4	241.2	257.8	269.5	53.8	Bearish
BERGEPAIN	492.2	512.0	502.1	485.1	475.2	458.2	474.5	469.4	44.9	Bullish
BRITANNIA	5201.4	5538.5	5369.9	5210.5	5041.9	4882.5	5100.8	4973.2	56.8	Bullish
CANBK	92.6	95.9	94.3	92.7	91.0	89.4	92.1	95.0	40.2	Bearish
CONCOR	756.0	808.2	782.1	759.9	733.8	711.6	754.7	757.0	35.4	Bearish
CGPOWER	612.0	668.4	640.2	618.8	590.6	569.1	613.6	638.7	44.0	Bearish
CHOLAFIN	1265.5	1333.3	1299.4	1262.4	1228.5	1191.4	1273.8	1257.0	25.6	Bullish
CIPLA	1439.5	1510.3	1474.9	1451.1	1415.7	1391.8	1444.2	1448.1	54.9	Bearish
COLPAL	2898.6	3070.2	2984.4	2889.2	2803.4	2708.2	2780.6	2751.9	45.4	Bullish
COALINDIA	385.3	408.3	396.8	387.9	376.4	367.5	383.3	379.1	47.2	Bullish
COFORGE	8076.4	8558.8	8317.6	8164.3	7923.1	7769.8	8382.6	8770.8	51.1	Bearish
COROMANDEL	1789.5	1849.6	1819.5	1798.0	1768.0	1746.5	1785.8	1839.0	55.6	Bearish
CROMPTON	370.0	394.8	382.4	360.6	348.2	326.5	348.8	355.1	53.1	Bearish

NSE 200 Support & Resistance

NSE 200 SUPPORT & RESISTANCE

SYMBOL	CLOSE	R2	R1	PIVOT	S1	S2	5 DMA	20 DMA	% Delivery	Trend
DABUR	539.1	566.8	553.0	537.8	524.0	508.8	529.2	521.4	46.1	Bullish
DALBHARAT	1827.4	1935.2	1881.3	1838.1	1784.2	1741.0	1843.1	1786.2	50.4	Bullish
DELHIVERY	320.9	332.8	326.8	320.2	314.2	307.6	319.9	327.0	57.8	Bearish
DEVYANI	181.9	197.3	189.6	177.7	169.9	158.0	169.2	179.0	40.7	Bearish
DIVISLAB	5618.6	5738.0	5678.3	5594.1	5534.4	5450.3	5592.5	5779.4	55.5	Bearish
DIXON	14714.4	16238.1	15476.2	14543.1	13781.2	12848.1	14696.7	15974.8	26.1	Bearish
DLF	760.7	785.4	773.0	755.0	742.7	724.7	745.6	743.0	53.4	Bullish
LALPATHLAB	2861.6	2949.1	2905.3	2850.2	2806.4	2751.3	2806.7	2851.7	43.2	Bearish
DMART	4023.8	4365.5	4194.6	3913.8	3742.9	3462.1	3678.2	3640.7	42.7	Bullish
DEEPAKNTR	2326.0	2395.9	2361.0	2322.4	2287.5	2248.9	2279.0	2341.3	32.4	Bearish
DRREDDY	1205.0	1228.8	1216.9	1208.5	1196.6	1188.2	1195.9	1282.4	66.2	Bearish
EICHERMOT	5390.2	5607.4	5498.8	5314.4	5205.8	5021.5	5207.4	5107.5	53.9	Bullish
ESCORTS	3450.2	3762.0	3606.1	3520.6	3364.7	3279.3	3536.4	3483.4	45.2	Bearish
FEDERALBNK	184.1	191.6	187.9	185.2	181.4	178.7	185.3	190.5	48.2	Bearish
FLUOROCHEM	3569.7	3745.1	3657.4	3569.7	3482.0	3394.3	3525.3	3703.0	41.9	Bearish
FORTIS	626.9	660.7	643.8	633.1	616.2	605.5	624.9	651.8	46.5	Bearish
GAIL	175.6	182.9	179.2	176.9	173.2	170.9	170.2	177.0	30.8	Bearish
GODREJCP	1191.7	1270.9	1231.3	1174.9	1135.3	1079.0	1135.1	1149.4	67.4	Bearish
GLAND	1530.5	1567.5	1549.0	1524.5	1506.0	1481.6	1510.9	1642.5	49.7	Bearish
GODREJPROP	2360.2	2484.9	2422.5	2340.3	2278.0	2195.8	2275.3	2331.1	54.7	Bearish
GRASIM	2440.8	2546.1	2493.4	2461.4	2408.8	2376.8	2461.3	2409.7	39.9	Bullish
GUJGASLTD	459.5	502.1	480.8	467.7	446.4	433.2	472.1	488.4	30.0	Bearish
HAVELLS	1656.2	1751.4	1703.8	1622.4	1574.8	1493.3	1557.5	1568.5	43.1	Bearish
HCLTECH	1694.0	1748.6	1721.3	1704.7	1677.4	1660.7	1709.0	1811.0	66.4	Bearish
HDFCAMC	3908.1	4132.1	4020.1	3895.6	3783.6	3659.0	3804.3	3921.7	57.3	Bearish
HDFCBANK	1691.0	1730.3	1710.6	1693.3	1673.7	1656.4	1685.8	1663.7	74.6	Bullish
HDFCLIFE	625.5	701.7	663.6	629.4	591.3	557.1	627.5	620.1	46.1	Bullish
HEROMOTOCO	4402.2	4674.0	4538.1	4387.1	4251.2	4100.2	4203.6	4117.6	53.1	Bullish
HAL	3775.0	4207.7	3991.3	3836.5	3620.1	3465.3	3758.1	3911.1	33.7	Bearish
HINDALCO	586.5	601.4	593.9	588.0	580.5	574.6	585.3	593.8	54.6	Bearish
HINDPETRO	344.9	371.4	358.1	345.6	332.3	319.8	349.9	364.0	38.8	Bearish
HINDUNILVR	2506.1	2681.3	2593.7	2514.4	2426.8	2347.6	2431.3	2391.4	64.3	Bullish
HONAUT	39385.8	42105.7	40745.7	39973.1	38613.2	37840.6	39886.3	40740.6	13.4	Bearish
HINDZINC	446.0	463.9	455.0	448.8	439.9	433.7	441.8	448.5	55.1	Bearish
ICICIBANK	1255.6	1277.8	1266.7	1250.2	1239.1	1222.7	1252.5	1238.5	70.4	Bullish
ICICIGI	1880.0	1969.2	1924.6	1863.4	1818.7	1757.5	1840.0	1861.6	65.8	Bearish
IDEA	9.6	10.7	10.1	9.4	8.9	8.1	9.1	8.8	30.7	Bullish
IDFCFIRSTB	62.0	64.2	63.1	62.4	61.2	60.5	60.9	61.6	51.1	Bearish
IGL	194.2	209.1	201.7	197.5	190.0	185.8	196.1	199.8	25.6	Bearish
INDHOTEL	801.5	858.9	830.2	776.8	748.1	694.8	771.7	789.5	72.4	Bearish
INDUSINDBK	1009.4	1052.2	1030.8	1001.6	980.2	951.0	968.0	964.3	44.9	Bullish
INDIANB	535.4	572.4	553.9	541.3	522.8	510.3	539.2	516.9	46.8	Bullish
INDIGO	4492.4	4662.9	4577.7	4431.7	4346.4	4200.4	4324.2	4178.7	62.6	Bullish
INDUSTOWER	352.8	383.5	368.1	351.1	335.7	318.7	349.2	348.2	54.7	Bullish
INFY	1851.4	1907.3	1879.3	1862.7	1834.7	1818.1	1860.4	1884.0	71.2	Bearish
NAUKRI	7784.4	8057.3	7920.8	7746.5	7610.1	7435.8	7546.1	7609.4	64.1	Bearish
IOC	125.4	131.7	128.6	126.6	123.4	121.5	125.5	128.2	51.9	Bearish
IPCALAB	1417.4	1492.4	1454.9	1432.4	1394.9	1372.4	1428.3	1544.3	51.7	Bearish
ICICIPRULI	606.0	680.3	643.1	606.1	568.9	531.9	608.1	625.3	47.4	Bearish
IRCTC	794.7	849.2	821.9	804.5	777.3	759.9	781.7	773.9	35.6	Bullish

NSE 200 Support & Resistance

NSE 200 SUPPORT & RESISTANCE										
SYMBOL	CLOSE	R2	R1	PIVOT	S1	S2	5 DMA	20 DMA	% Delivery	Trend
IRFC	141.2	161.7	151.4	145.3	135.1	128.9	144.0	141.3	24.8	Bearish
ITC	462.6	489.8	476.2	457.9	444.2	425.9	443.0	441.0	69.9	Bullish
JINDALSTEL	776.4	832.4	804.4	779.8	751.8	727.2	819.6	886.9	31.8	Bearish
JSWSTEEL	934.3	977.3	955.8	933.7	912.2	890.2	936.8	917.3	53.6	Bullish
JSWENERGY	472.0	533.4	502.7	485.9	455.2	438.3	488.6	539.9	27.1	Bearish
JUBLFOOD	739.8	790.8	765.3	728.2	702.7	665.5	697.4	700.4	23.7	Bearish
CUMMINSIND	2797.5	3103.2	2950.3	2843.6	2690.7	2583.9	2830.6	2917.6	57.2	Bearish
KOTAKBANK	1903.1	1942.8	1923.0	1897.3	1877.4	1851.7	1902.8	1841.9	71.8	Bullish
LAURUSLABS	595.6	626.3	610.9	592.7	577.3	559.1	564.5	575.3	21.1	Bearish
LICHSGFIN	584.7	610.8	597.8	587.6	574.6	564.4	582.5	568.9	40.7	Bullish
LICI	848.2	892.5	870.3	847.3	825.1	802.1	833.1	837.8	37.8	Bearish
LUPIN	2056.3	2157.8	2107.0	2067.9	2017.1	1978.0	2058.3	2136.7	60.4	Bearish
LT	3447.5	3720.1	3583.8	3492.9	3356.6	3265.7	3459.9	3509.0	41.9	Bearish
LTF	146.0	150.4	148.2	145.4	143.2	140.5	144.8	141.5	35.9	Bullish
LTIM	5906.3	5991.8	5949.1	5906.1	5863.4	5820.4	5841.8	5871.1	51.3	Bearish
LTTS	5418.6	5498.2	5458.4	5409.0	5369.2	5319.8	5348.1	5182.4	39.1	Bullish
MANKIND	2481.6	2576.5	2529.0	2482.2	2434.8	2388.0	2467.3	2604.4	61.1	Bearish
MFSL	1123.3	1218.2	1170.7	1114.5	1067.0	1010.8	1087.6	1070.9	54.8	Bullish
MAXHEALTH	1108.3	1148.3	1128.3	1097.8	1077.8	1047.3	1052.0	1084.1	67.4	Bearish
M&M	3076.8	3164.2	3120.5	3055.2	3011.5	2946.3	2966.6	2960.5	56.8	Bullish
M&MFIN	283.3	291.6	287.4	283.0	278.8	274.3	277.4	271.8	32.5	Bullish
MOTHERSON	142.6	145.6	144.1	141.9	140.4	138.2	140.5	145.0	57.3	Bearish
MPHASIS	2798.5	2907.3	2852.9	2814.6	2760.2	2721.8	2885.4	2864.7	54.8	Bearish
MARICO	694.2	769.9	732.1	699.1	661.2	628.2	674.6	664.1	29.2	Bullish
MRF	114183.5	115917.7	115050.6	113632.9	112765.8	111348.1	113131.4	114228.0	42.1	Bearish
MARUTI	12916.5	13686.4	13301.5	12765.1	12380.1	11843.7	12265.8	11979.5	51.8	Bullish
MSUMI	56.7	58.7	57.7	56.5	55.5	54.3	55.1	55.8	55.0	Bearish
MUTHOOT FIN	2182.5	2323.8	2253.1	2204.3	2133.7	2084.9	2199.5	2170.0	47.8	Bullish
NESTLEIND	2327.2	2436.2	2381.7	2319.5	2265.0	2202.7	2239.0	2218.7	44.6	Bullish
NAVINFLUOR	4132.7	4263.8	4198.2	4118.4	4052.9	3973.1	3898.4	3737.7	17.0	Bullish
NHPC	78.8	84.9	81.9	79.6	76.5	74.2	76.5	77.4	35.1	Bearish
NMDC	64.4	67.8	66.1	65.1	63.4	62.3	65.0	65.1	30.2	Bearish
NTPC	317.7	335.8	326.8	321.8	312.7	307.7	320.8	321.0	68.3	Bearish
NYKAA	175.5	189.5	182.5	173.2	166.2	156.9	170.3	169.7	35.2	Bullish
OBEROIRLTY	1844.3	1909.8	1877.0	1821.0	1788.3	1732.3	1760.8	1928.3	48.5	Bearish
OFSS	8893.3	9732.9	9313.1	8761.5	8341.7	7790.1	9158.6	10199.9	39.8	Bearish
OIL	410.7	435.2	422.9	414.7	402.5	394.3	410.7	448.2	45.6	Bearish
ONGC	257.6	266.7	262.1	257.9	253.4	249.2	255.4	260.6	49.4	Bearish
PAGEIND	46572.8	49346.1	47959.4	45782.2	44395.5	42218.3	45094.7	46161.6	56.8	Bearish
PATANJALI	1819.3	1868.7	1844.0	1823.3	1798.6	1777.9	1832.8	1836.5	59.7	Bearish
PAYTM	743.1	806.9	775.0	755.0	723.1	703.2	773.7	839.4	24.3	Bearish
PRESTIGE	1431.7	1551.5	1491.6	1430.9	1371.0	1310.3	1344.6	1405.8	36.5	Bearish
PGHH	14661.3	14924.5	14792.9	14618.5	14486.9	14312.5	14426.4	14589.3	55.0	Bearish
PIIND	3481.7	3594.9	3538.3	3484.9	3428.3	3374.9	3439.0	3503.3	56.9	Bearish
PIDILITIND	2947.3	3087.1	3017.2	2938.7	2868.8	2790.3	2892.1	2854.3	57.1	Bullish
PEL	1011.9	1039.6	1025.7	1007.1	993.3	974.7	986.2	1002.4	28.1	Bearish
PETRONET	308.8	320.2	314.5	309.2	303.5	298.2	303.5	319.0	42.3	Bearish
PNB	99.4	103.9	101.6	99.7	97.5	95.6	98.9	99.2	29.1	Bearish
POLICYBZR	1716.2	1862.4	1789.3	1697.0	1623.9	1531.6	1690.8	1757.4	43.8	Bearish
POLYCAB	5845.7	6276.5	6061.1	5865.6	5650.2	5454.6	5835.4	6324.8	40.6	Bearish

NSE 200 Support & Resistance

NSE 200 SUPPORT & RESISTANCE

SYMBOL	CLOSE	R2	R1	PIVOT	S1	S2	5 DMA	20 DMA	% Delivery	Trend
POONAWALLA	308.6	322.6	315.6	308.8	301.8	294.9	310.2	314.4	24.3	Bearish
PFC	404.1	442.3	423.2	412.5	393.4	382.7	405.1	417.0	48.6	Bearish
PERSISTENT	5933.6	6274.3	6103.9	5968.5	5798.1	5662.7	6041.8	6084.0	46.5	Bearish
POWERGRID	289.9	311.3	300.6	294.6	283.9	277.9	291.7	296.8	67.6	Bearish
RECLTD	427.9	472.6	450.2	437.8	415.4	403.0	434.5	463.9	48.5	Bearish
RELIANCE	1264.6	1288.3	1276.4	1258.7	1246.9	1229.2	1250.5	1257.5	59.0	Bearish
SAIL	106.5	110.3	108.4	106.4	104.5	102.5	105.3	106.9	31.0	Bearish
SBICARD	825.0	872.9	848.9	809.5	785.5	746.1	779.7	752.6	53.2	Bullish
SBILIFE	1454.4	1607.1	1530.7	1451.6	1375.3	1296.2	1458.3	1470.7	59.5	Bearish
SBIN	766.0	792.2	779.1	765.6	752.5	739.0	762.5	757.9	45.3	Bullish
SHRIRAMFIN	531.8	564.8	548.3	533.2	516.7	501.5	539.5	538.0	48.6	Bearish
SIEMENS	5748.3	6344.1	6046.2	5848.1	5550.2	5352.1	5841.1	5982.5	58.2	Bearish
SONACOMS	503.5	520.6	512.0	505.4	496.9	490.3	502.2	544.9	69.2	Bearish
SHREECEM	27363.8	28766.6	28065.2	27242.5	26541.1	25718.4	26934.9	25840.2	32.5	Bullish
SRF	2826.1	2915.9	2871.0	2817.5	2772.6	2719.1	2746.4	2591.8	38.7	Bullish
SUNPHARMA	1742.2	1810.5	1776.4	1754.8	1720.7	1699.1	1733.2	1778.8	55.5	Bearish
SUNTV	625.2	638.6	631.9	623.2	616.5	607.8	627.6	646.7	30.2	Bearish
SYNGENE	739.3	761.3	750.3	740.7	729.7	720.0	749.8	811.6	48.1	Bearish
TATASTEEL	133.0	138.2	135.6	132.9	130.3	127.7	131.6	129.6	35.9	Bullish
TATACONSUM	1069.9	1113.5	1091.7	1053.2	1031.4	993.0	996.6	973.0	29.6	Bullish
TATACOMM	1616.7	1667.4	1642.1	1617.3	1592.0	1567.2	1590.2	1655.4	46.9	Bearish
TCS	4073.2	4168.3	4120.7	4088.4	4040.8	4008.5	4085.1	4104.0	69.4	Bearish
TECHM	1646.4	1705.5	1676.0	1656.3	1626.8	1607.1	1664.1	1671.2	62.9	Bearish
TATAELXSI	6381.3	6481.1	6431.2	6350.1	6300.2	6219.2	6230.4	6227.5	33.6	Bullish
TIINDIA	3175.0	3420.8	3297.9	3218.9	3096.0	3017.0	3224.7	3328.8	63.3	Bearish
TORNTPOWER	1397.4	1519.3	1458.3	1423.6	1362.7	1328.0	1451.1	1432.8	53.0	Bearish
TATAPOWER	368.4	387.2	377.8	369.6	360.2	351.9	356.5	362.0	43.5	Bearish
RAMCOCEM	896.8	947.0	921.9	898.5	873.4	850.1	914.6	902.4	39.1	Bearish
TRENT	6189.5	6639.0	6414.3	6045.7	5820.9	5452.3	5701.2	6029.0	25.1	Bearish
TRIDENT	30.8	33.2	32.0	31.3	30.1	29.4	30.3	31.2	30.7	Bearish
TORNTPHARM	3207.7	3348.4	3278.0	3232.1	3161.7	3115.8	3302.1	3261.4	52.4	Bearish
TITAN	3552.0	3758.9	3655.4	3531.7	3428.3	3304.6	3421.5	3396.9	43.6	Bullish
TATACHEM	964.3	1004.9	984.6	968.6	948.3	932.3	964.6	970.9	36.6	Bearish
TTML	73.4	80.1	76.8	73.5	70.2	67.0	71.1	72.6	26.5	Bearish
TATAMOTORS	706.6	734.6	720.6	710.7	696.7	686.9	720.1	753.0	31.8	Bearish
TVSMOTOR	2555.1	2812.0	2683.6	2559.6	2431.1	2307.1	2453.8	2326.3	53.9	Bullish
UBL	2235.8	2387.3	2311.5	2184.5	2108.8	1981.8	2122.0	2041.4	25.1	Bullish
UNIONBANK	112.4	119.1	115.8	113.5	110.2	107.9	112.4	109.1	45.7	Bullish
UNITDSPR	1498.1	1586.3	1542.2	1463.9	1419.8	1341.4	1434.8	1467.4	65.4	Bearish
UPL	604.0	627.0	615.5	606.3	594.8	585.5	573.3	552.9	20.0	Bullish
ULTRACEMCO	11259.2	12270.2	11764.7	11281.5	10775.9	10292.7	11413.4	11049.2	67.0	Bullish
VBL	561.4	605.0	583.2	561.1	539.3	517.3	543.9	560.8	70.0	Bearish
VEDL	439.9	454.5	447.2	439.3	432.0	424.1	433.9	439.9	31.2	Bearish
VOLTAS	1324.0	1460.4	1392.2	1263.6	1195.4	1066.8	1351.8	1532.2	40.9	Bearish
WHIRLPOOL	1176.4	1246.6	1211.5	1177.3	1142.2	1108.1	1346.0	1579.6	41.5	Bearish
WIPRO	304.8	317.0	310.9	307.1	301.0	297.2	308.4	301.4	61.3	Bullish
YESBANK	19.0	19.7	19.4	19.1	18.7	18.4	18.9	18.5	35.8	Bullish
ZEEL	109.1	115.5	112.3	108.4	105.1	101.2	105.8	118.3	46.3	Bearish
ZOMATO	236.3	255.6	245.9	230.8	221.1	206.0	221.2	230.3	47.4	Bearish
ZYDUSLIFE	975.8	997.2	986.5	969.9	959.2	942.6	948.4	975.6	66.0	Bearish

Disclaimer:

This report has been prepared by HDFC Securities Ltd and is solely for information of the recipient only. The report must not be used as a singular basis of any investment decision. The views herein are of a general nature and do not consider the risk appetite or the particular circumstances of an individual investor; readers are requested to take professional advice before investing. Nothing in this document should be construed as investment advice. Each recipient of this document should make such investigations as they deem necessary to arrive at an independent evaluation of an investment in securities of the companies referred to in this document (including merits and risks) and should consult their own advisors to determine merits and risks of such investment. The information and opinions contained herein have been compiled or arrived at, based upon information obtained in good faith from sources believed to be reliable. Such information has not been independently verified and no guaranty, representation of warranty, express or implied, is made as to its accuracy, completeness or correctness. All such information and opinions are subject to change without notice. Descriptions of any company or companies or their securities mentioned herein are not intended to be complete. HSL is not obliged to update this report for such changes. HSL has the right to make changes and modifications at any time.

This report is not directed to, or intended for display, downloading, printing, reproducing or for distribution to or use by, any person or entity who is a citizen or resident or located in any locality, state, country or other jurisdiction where such distribution, publication, reproduction, availability or use would be contrary to law or regulation or what would subject HSL or its affiliates to any registration or licensing requirement within such jurisdiction.

If this report is inadvertently sent or has reached any person in such country, especially, United States of America, the same should be ignored and brought to the attention of the sender. This document may not be reproduced, distributed or published in whole or in part, directly or indirectly, for any purposes or in any manner.

Foreign currencies denominated securities, wherever mentioned, are subject to exchange rate fluctuations, which could have an adverse effect on their value or price, or the income derived from them. In addition, investors in securities such as ADRs, the values of which are influenced by foreign currencies effectively assume currency risk. It should not be considered to be taken as an offer to sell or a solicitation to buy any security.

This document is not, and should not, be construed as an offer or solicitation of an offer, to buy or sell any securities or other financial instruments. This report should not be construed as an invitation or solicitation to do business with HSL. HSL may from time to time solicit from, or perform broking, or other services for, any company mentioned in this mail and/or its attachments.

HSL and its affiliated company(ies), their directors and employees may; (a) from time to time, have a long or short position in, and buy or sell the securities of the company(ies) mentioned herein or (b) be engaged in any other transaction involving such securities and earn brokerage or other compensation or act as a market maker in the financial instruments of the company(ies) discussed herein or act as an advisor or lender/borrower to such company(ies) or may have any other potential conflict of interests with respect to any recommendation and other related information and opinions.

HSL, its directors, analysts or employees do not take any responsibility, financial or otherwise, of the losses or the damages sustained due to the investments made or any action taken on basis of this report, including but not restricted to, fluctuation in the prices of shares and bonds, changes in the currency rates, diminution in the NAVs, reduction in the dividend or income, etc.

HSL and other group companies, its directors, associates, employees may have various positions in any of the stocks, securities and financial instruments dealt in the report, or may make sell or purchase or other deals in these securities from time to time or may deal in other securities of the companies / organizations described in this report. As regards the associates of HSL please refer the website.

HSL or its associates might have managed or co-managed public offering of securities for the subject company or might have been mandated by the subject company for any other assignment in the past twelve months.

HSL or its associates might have received any compensation from the companies mentioned in the report during the period preceding twelve months from the date of this report for services in respect of managing or co-managing public offerings, corporate finance, investment banking or merchant banking, brokerage services or other advisory service in a merger or specific transaction in the normal course of business.

HSL or its analysts did not receive any compensation or other benefits from the companies mentioned in the report or third party in connection with preparation of the research report. Accordingly, neither HSL nor Research Analysts have any material conflict of interest at the time of publication of this report. Compensation of our Research Analysts is not based on any specific merchant banking, investment banking or brokerage service transactions. HSL may have issued other reports that are inconsistent with and reach different conclusion from the information presented in this report. Research entity has not been engaged in market making activity for the subject company. Research analyst has not served as an officer, director or employee of the subject company. We have not received any compensation/benefits from the subject company or third party in connection with the Research Report.

Please note that HDFC Securities has a proprietary trading desk. This desk maintains an arm's length distance with the Research team and all its activities are segregated from Research activities. The proprietary desk operates independently, potentially leading to investment decisions that may deviate from research views.

HDFC securities Limited, I Think Techno Campus, Building - B, "Alpha", Office Floor 8, Near Kanjurmarg Station, Opp. Crompton Greaves, Kanjurmarg (East), Mumbai 400 042 Phone: (022) 3075 3400 Fax: (022) 2496 5066

Compliance Officer: Murli V Karkera Email: complianceofficer@hdfcsec.com Phone: (022) 3045 3600

For grievance redressal contact Customer Care Team Email: customercare@hdfcsec.com Phone: (022) 3901 9400

HDFC Securities Limited, SEBI Reg. No.: NSE, BSE, MSEI, MCX: INZ000186937; AMFI Reg. No. ARN: 13549; PFRDA Reg. No. POP: 11092018; IRDA Corporate Agent License No.: CA0062; SEBI Research Analyst Reg. No.: INH000002475; SEBI Investment Adviser Reg. No.: INA000011538; CIN - U67120MH2000PLC152193

Investment in securities market are subject to market risks. Read all the related documents carefully before investing.

Mutual Funds Investments are subject to market risk. Please read the offer and scheme related documents carefully before investing.

Registration granted by SEBI, membership of BASL (in case of IAs) and certification from NISM in no way guarantee performance of the intermediary or provide any assurance of returns to investors.

Thank you!